



Republic of Macedonia  
Ministry of Environment  
and Physical Planning



Schweizerische Eidgenossenschaft  
Confédération suisse  
Confederazione Svizzera  
Confederaziun svizra

Swiss Agency for Development  
and Cooperation SDC



*Empowered lives.  
Resilient nations.*

# Lake Prespa Restoration Programme

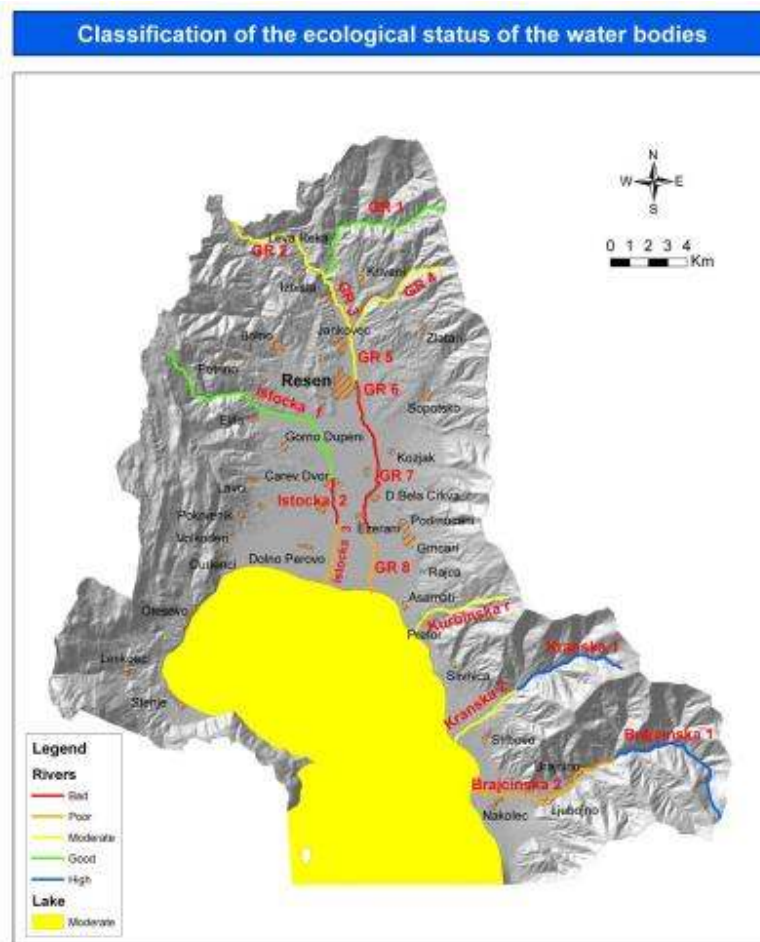


# Prespa – A Success Story

- One of the most advanced integrated transboundary lake basin management models in the region
- Considerable results in reducing the pressures by coordinated efforts of all three co-basin states
- Provides valuable experience and serves as an example for Integrated River Basin (Watershed) Management

- Variety of projects in the areas of agriculture, forestry, fisheries, wastewater and waste management, river restoration, industrial pollution...
- Transboundary and national strategies, plans and programs prepared
- Community action mobilized, productive partnerships and networks established
- Considerable results in reducing the pressures from different sources
- However, additional efforts are needed to reverse the trends and improve ecological status

# Prespa Lake Watershed Management Plan



- Prespa Lake Watershed Management Plan
- Prespa Lake Watershed Management Council
- Future projects: implementation of WMP
- SDC funding: 5,000,000 CHF

# The Solution

- New programme founded on the Watershed Management Plan, aiming at reducing the pressures from:
  - agriculture
  - forestry
  - polluted tributaries
  - wastewaters
  - solid waste
- Lake Monitoring and Management Station
- Two-tier implementation strategy

# Reducing pressures and improving ecological status

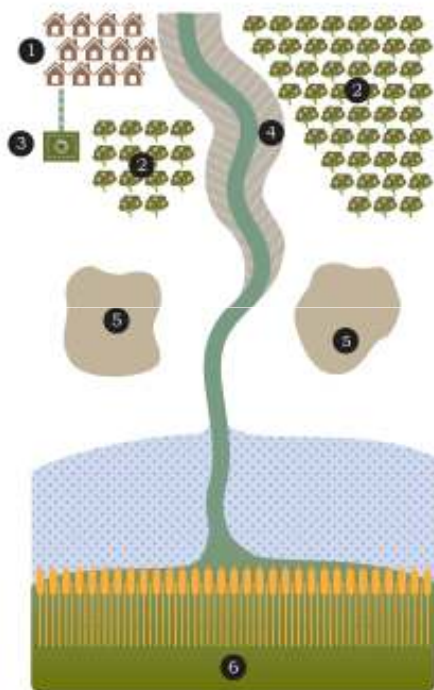
- Solid basis for long-term active management of Lake's eutrophication processes
  - The Eutrophication model
  - Design of Lake Management Monitoring and Management Service
  - Sustainable financing
- Control of erosion processes and sediment load

- Reducing environmental impacts of agriculture
  - Agro-ecological practices and GAP in apple farming
  - Improving irrigation practices / Groundwater management
  - Agro-biodiversity preservation
- Wetland restoration
  - Restoration of river delta (flood control, retention and filtering of polluted water)
  - Use of wetlands for advanced wastewater treatment (nutrient removal)
- Agricultural waste management systems

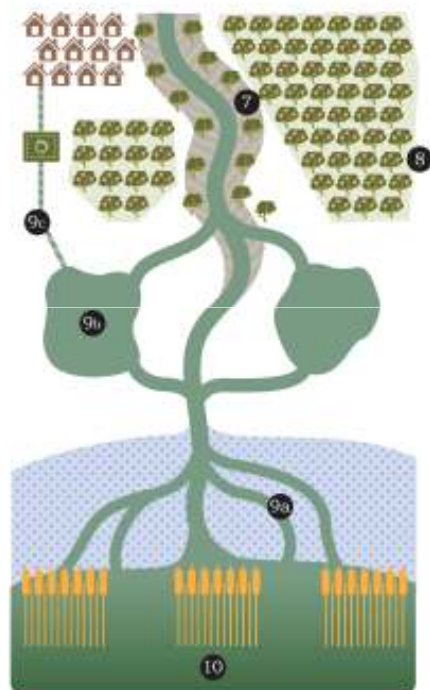


# What are we doing about it?

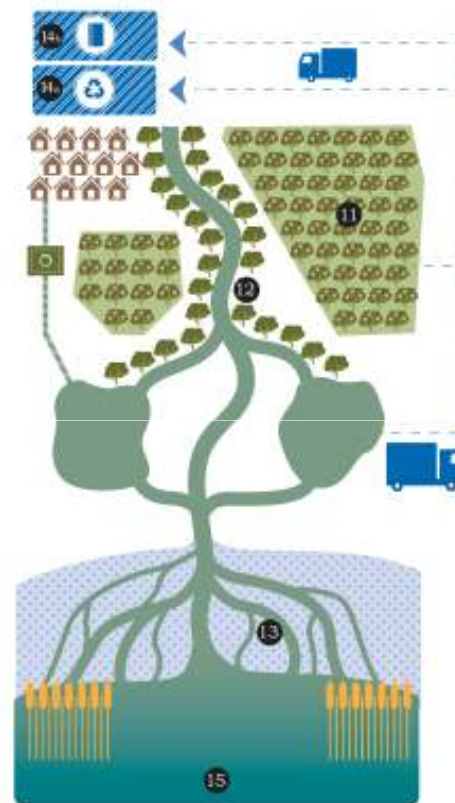
## An Integrated Approach to Restoring Lake Prespa



- 1 Settlements
- 2 Farmland
- 3 Wastewater Treatment Plant
- 4 Eroded land
- 5 Abandoned fishponds
- 6 High lake eutrophication levels



- 7 Erosion control works - reforestation/afforestation and control of torrents
- 8 Agroecological farming practices
- 9 Wetland restoration
  - a-River delta restoration
  - b-Turning fish ponds into viable wetlands
  - c-Tertiary treatment of wastewaters
- 10 Considerable reduction of pressures to the lake



- 11 Agroecological and organic farming
- 12 Regeneration of the riparian vegetation
- 13 Functional wetland providing safeguarding against upstream pressures
- 14 Better management of agricultural waste
  - a-Excess biomass transformed into compost (1000 tons/year of compost will be returned to farmland)
  - b-Safe disposal of agrochemicals packing
- 15 Restoration of Lake's ecological functions



# Building sustainable capacities for IWM

- Monitoring and management capacities
  - Lake Monitoring and Management Station
- Watershed management capacities (municipality and WMC)
- Sharing and replicating lessons learnt
  - Take part in knowledge networks
  - Strengthening legal and regulatory environment
  - Communication, education and public awareness raising

# Expected results

- Considerable stress reduction and ecological improvements
- Benefits for local communities and key sectors (tourism, agriculture, fisheries, health protection, water supply)
- National/regional model for IWM
- Transboundary effects
- Building sustainable capacities (including financing mechanisms)



THANK YOU!